

Talent Development

Lindsay Dunn, Swim England National Talent Officer

Sunday 3rd February 2019



England Talent aim to influence:

- The 'Daily Training Environment'

*LTS, Clubs, Performance Centres and **National Training Centres***

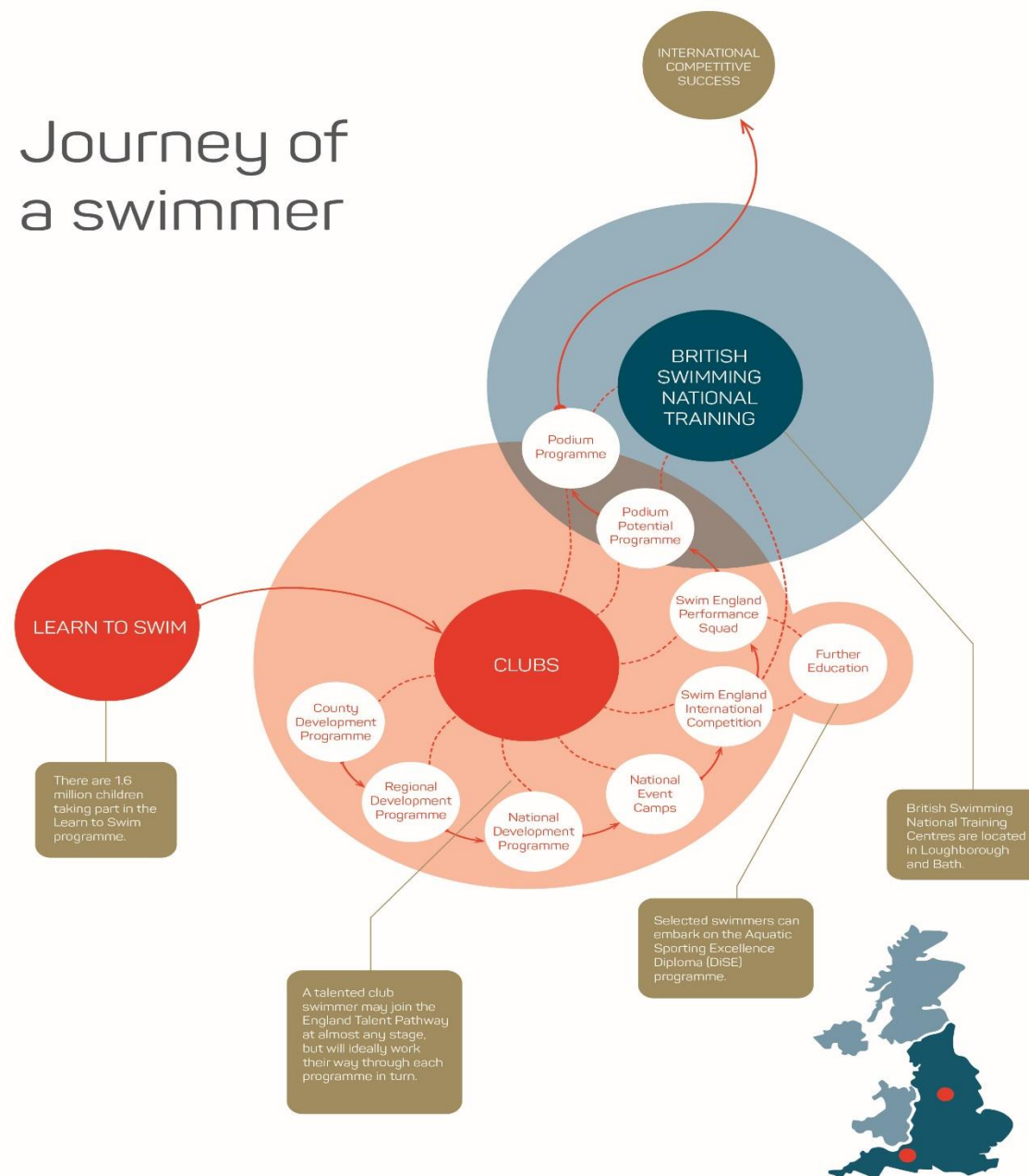
- The 'Domestic Competition Programme'

Calendar planning (Championships, Open Meets, other Competitions organised by Key Partners)

- The 'Development Programme Pathway'

Provides enhanced support to the swimmers and the team behind the swimmers

Journey of a swimmer

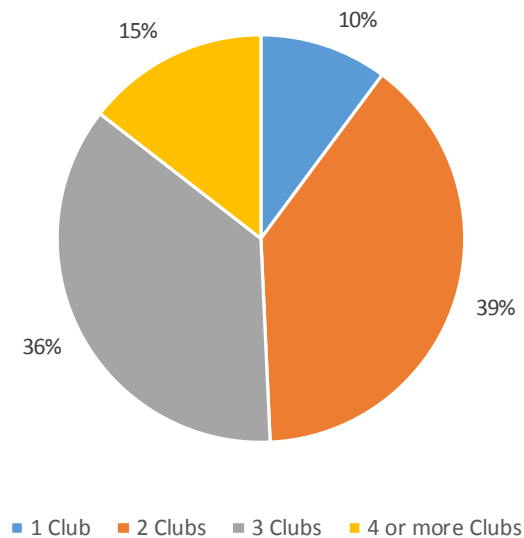


TRANSITION POINTS

TRENDS

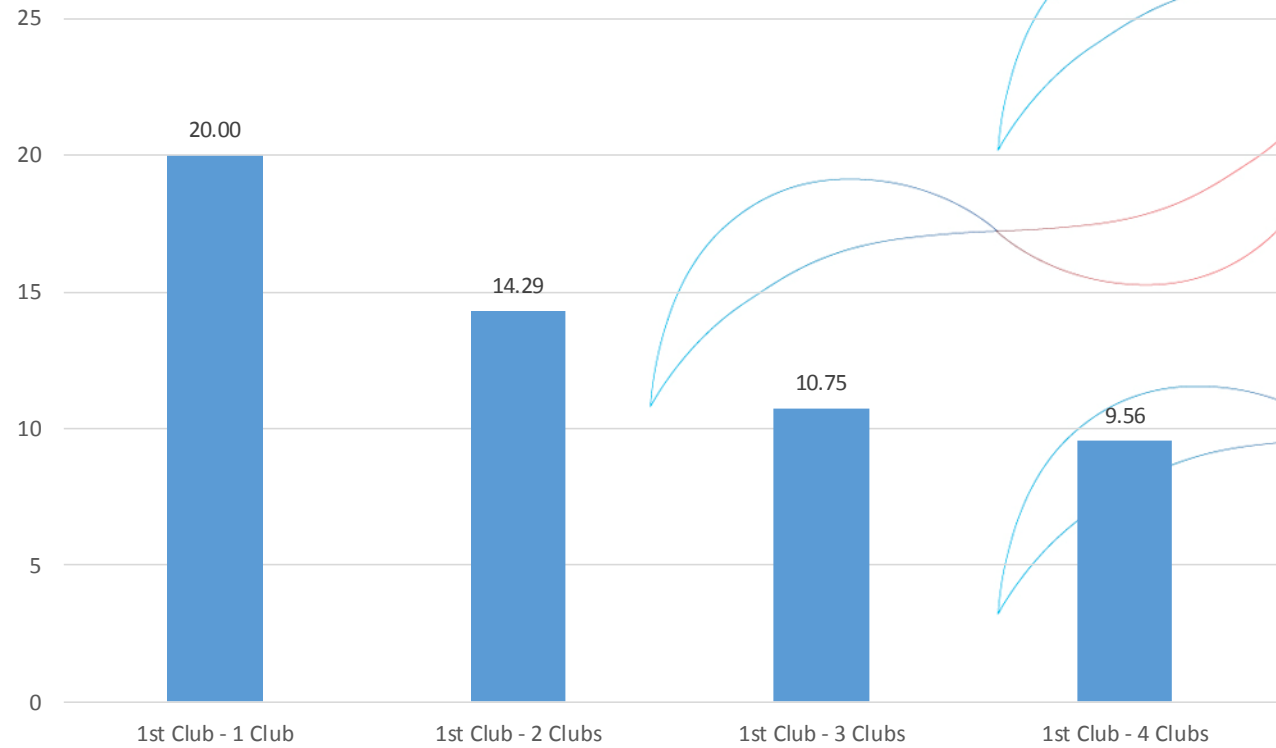
- Single Club – 10%
- 4 or more Clubs – 15%
- 2/3 Clubs is the 'norm'

Number of Clubs Programme Athletes have had during their career



FIRST CLUBS

Average Available Pool Time – Top Squad (Hours/Week)



Main Journey Types...

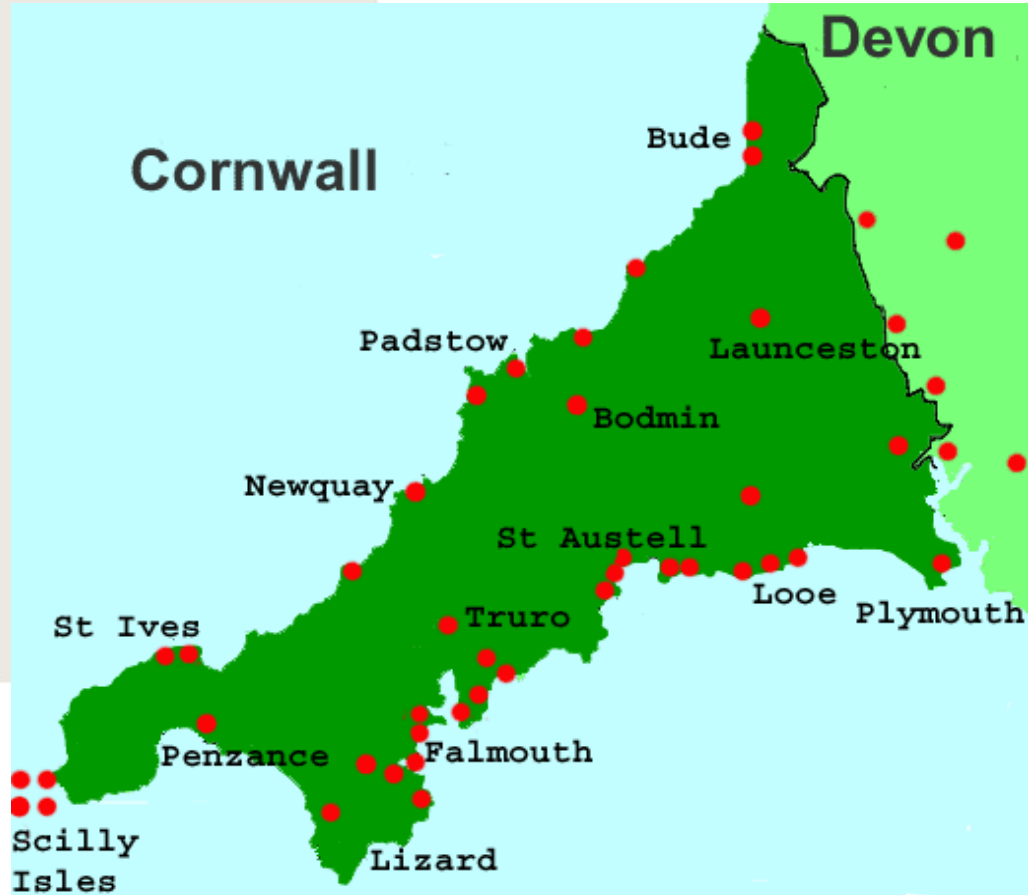
	First Club Age	1st Transition Age	2nd Transition Age
2 Clubs	8.6	16.4	
3 Clubs	8.2	12.8	17.6

3 CLUB JOURNEY

	First Club	1st Transition Age	2nd Transition Age
3 Transitions	8.24	12.8	17.6

- Transitions mirror ages in which changes in education occur
- There are more options available to change geographically
- Clubs at the different stages of their journey are setup to provide different things

What does it look like in Cornwall?



- No clubs offering 20 hours per week to their Top Squad.
- Limited land training/ SSSM provision.
- Very few head coaches due to the limited number of larger programmes.
- Limited coaches and swimmers populating our pathways ...

Moving Cornwall Forwards

- Survey distributed to gather insight into current club provision in Cornwall.
- Review of the survey to highlight common themes/ issues which need to be addressed.
- Identification of one club (or a few clubs already working together/ willing to work together) who SE would work with to develop their club structure, governance, training provision for their top squad etc.



